

Ferry Cavalier Des Mers



Make	Model	Length	Price	Year	Condition
Ferry Cavalier	Des Mers	91 ft	\$ 549,000	1974	Used
Boat Name	Hull Material	Number of Engines	Fuel Type		
CAVALIER DES MERS	Aluminum	3	Diesel		

The Cavalier Des Mers is an all welded aluminum monohull, suitable for passage or excursion day trips with a maximum 250 passenger compliment and a crew compliment of 4. The vessel is equipped with three Detroit Diesel engines for a combined 1,530 horsepower. This ferry serviced the Bull Arm ExxonMobil project. To ready the vessel for this service, in 2013 an extensive retrofit including drydocking was undertaken. Since that time the vessel has been professional maintained, with no spared expenses. The vessel is inspected by BV to Transport Canada

Additional Information and Photos

standards. In class with July 2017 Inspection complete. She has just completed a 3,000 mils passag...

Additional Information and Photos

Measurements

Cruising Speed: 22 kn

LOA: 91 ft 11 in

Propulsion

Engine #1

Engine Make: Detroit

Primary Engines: Inboard

Hours: unknown

Power: 510 hp

Engine #2

Engine Make: Detroit

Hours: unknown

Power: 510 hp

Engine #3

Engine Make: Detroit

Hours: unknown

Power: 510 hp

Specifications

Length O.A. 91' 11" 28.02 m

Breadth O.A. 21' 5" 6.53 m

Moulded Depth 8' 5" 2.57 m

Design Draft 4' 3" 1.30 m

Gross tonnage 161 t

Net tonnage 78 t

Capacity 250 passengers, 4 crew

Additional Information and Photos

Construction Aluminum

Weight 68.8 t

Speed 18 knots

Year Built/Rebuilt 1974 / 2013

GENERAL INFORMATION

NAME OF VESSEL: "Cavalier Des Mers"
TYPE OF SURVEY: "Vessel Appraisal"
OVERALL VESSEL RATING: Vessel was in "Above Average Condition"
when Marine Survey was conducted in
Montreal, Canada
ESTIMATED MARKET VALUE: \$625,000
YEAR/MAKE/MODEL OF VESSEL: 1074 / 2013 / 250 Passenger Ferry Vessel
YEAR BUILT: 1974 / Refit is 2013
MODEL YEAR: 1974
MODEL OF VESSEL: 250 passenger ferry vessel.
OFFICIAL NUMBER: 7431430
PLACE OF SURVEY: Marine Survey was conducted in Bull
Arm, Canada on June 13th, 2017
DATE/TIME OF SURVEY: June 13, 2017
HULL MATERIAL: 7/16 inch diameter aluminum plate.
HULL TYPE: Full displacement electric welded
aluminum monohull.
LENGTH OVER ALL (L.O.A.): 91 feet 11 inches.
BEAM: 21 feet 5 inches.
DRAFT: 4 feet 3 inches.
DEPTH: 8 feet 5 inches.
DISPLACEMENT: 68.8 tons.
GROSS TONS: 161 Gross Tons.
NET TONS: 78 Net Tons.
PROPULSION SYSTEM: Triple Detroit Diesel 510 horsepower
turbo-charged diesel engines.

Additional Information and Photos

HULL DECK AND SUPERSTRUCTURE

HULL CONSTRUCTION

TYPE:

Full displacement with keel.

MATERIAL:

7/16 inch thick aluminum plate.

EXTERIOR HULL:

Hull is painted white.

BULKHEADS:

7/16 inch thick electric welded aluminum plate bulkheads.

STRINGERS:

The longitudinal strength is enhanced by full length aluminum stringers.

STEM:

Sharply raked bow stem.

TRANSOM:

Square transom.

BILGE:

Deep (below decks) bilge area provides the area for most boat systems and tankage.

LIMBER HOLES:

Limber holes are of adequate size.

FRAMES (RIBS):

Aluminum frames (ribs).

DECK CONSTRUCTION

TYPE:

7/16 inch thick electric welded aluminum upper and lower decks.

DECK FITTINGS

STANCHIONS:

Port and starboard upper deck and lower deck aluminum safety rails.

CHOCKS AND CLEATS:

Adequate port and starboard aluminum cleats strategically located.

SUPERSTRUCTURE

MATERIAL:

Pilothouse superstructure and cabin superstructure are constructed of 7/16 inch thick electric welded aluminum plate.

Additional Information and Photos

DECK HATCHES:

Engine room hatch.

CANVAS AND SUPPORT STRUCTURE:

Upper deck is fitted with canvas top fitted on aluminum frame.

BRIDGE DECK

MATERIAL:

There is passenger seating on upper level deck.

SEATS:

Adequate seating for 250 passengers and seven crew members.

WINDSHIELD:

Pilothouse and cabin are fitted with laminated tinted plated safety glass windows. Pilothouse is fitted with laminated safety glass windshield panels..

ADDITIONAL EQUIPMENT AND ACCESSORIES

FENDERS:

Adequate rubber docking fenders.

DOCK LINES:

Adequate 1 inch diameter docking lines.

CABIN APPOINTMENTS

INTERIOR DESCRIPTION:

HEADS:

Ladies and men head facilities with electric flush toilets and vanities with sinks.

LIGHT FIXTURES:

12 volt cabin lights.

PROPULSION

MAIN ENGINES

TYPE:

Triple diesel engines.

MANUFACTURER:

Detroit Diesel.

HORSE POWER:

Triple 510 horsepower diesel engines.

NUMBER OF CYLINDERS:

Eight cylinders.

ENGINE MOUNTS AND BED:

Aluminum engine

Additional Information and Photos

PROPULSION

"Cavalier Des Mers" surveyed by Kelly Marine Surveyors, Inc. - Ft. Lauderdale, FL 33316 Page 8 of 15

MAIN ENGINES (continued)

BILGE BLOWERS:

Port and starboard engine room blowers,

EXHAUST SYSTEM:

Raw water cooled with cast iron risers and flexible connection eight inch pipes.

FUEL TRANSFER (PUMPS):

115 V.A.C. /230 V.A.C. fuel transfer pump.

COOLING SYSTEM

TYPE:

Closed reservoir type cooling with raw water cooled exhaust.

FUEL SYSTEM

MAIN ENGINE(S) FUEL SYSTEM

FUEL TYPE:

Diesel fuel.

MATERIAL:

7/16 inch thick electric welded aluminum fuel tanks.

LOCATION:

electric welded to hull.

FUEL LINES AND FITTINGS:

Both supply and return are copper lines with copper alloy fittings. Appears serviceable.

FUEL MANIFOLD VALVES:

Ball type valves.

ELECTRICAL SYSTEMS

ELECTRICAL SYSTEM (D.C. SYSTEM)

VOLTAGE:

12 V.D.C. / 24 V.D.C.

BATTERIES:

122 volt 8-D lead-acid batteries.

CHARGING SYSTEM (BATTERY CHARGER):

12 volt and 24 volt automatic battery chargers.

CHARGING SYSTEM (ALTERNATOR):

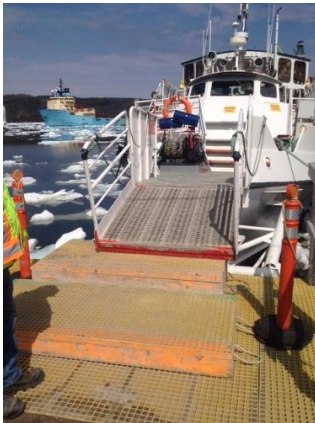
Port and starboard engines are equipped with 24 volt belt driven alternators.

Additional Information and Photos

Disclaimer

The Company offers the details of this vessel in good faith but cannot guarantee or warrant the accuracy of this information nor warrant the condition of the vessel. A buyer should instruct his agents, or his surveyors, to investigate such details as the buyer desires validated. This vessel is offered subject to prior sale, price change, or withdrawal without notice.

Additional Information and Photos



Additional Information and Photos



Additional Information and Photos



Additional Information and Photos



Additional Information and Photos



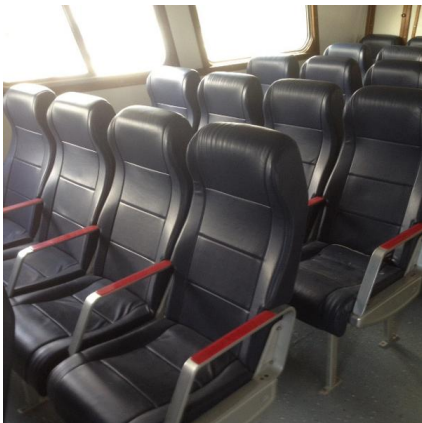
Additional Information and Photos



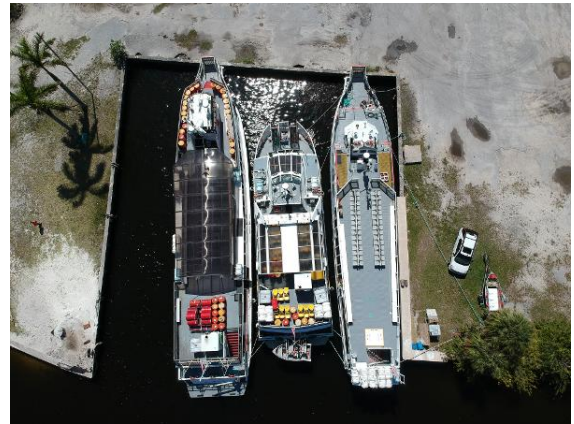
Additional Information and Photos



Additional Information and Photos



Additional Information and Photos



Additional Information and Photos

