

Ferry Cavalier Royal



Make	Model	Length	Price	Year	Condition
Ferry	Cavalier Royal	94 ft	\$ 490,000	1963	Used
Boat Name	Hull Material	Number of Engines	Fuel Type		
CAVALIER ROYAL	Aluminum	2	Diesel		

The Cavalier Royal is an all welded aluminum monohull, suitable for passage or excursion day trips with a maximum 297 passenger compliment and a crew compliment of 4. The vessel is equipped with Detroit Diesel twin engines for a combined 1,880 horsepower. This ferry serviced the Bull Arm ExxonMobil project. To ready the vessel for this service, in 2013 an extensive refit including drydocking was undertaken. Since that time the vessel has been professional maintained, with no spared expenses. The vessel is inspected by BV to Transport Canada standards. Recent Class inspection completed in July 2017. She has just made the 3,000 mile passage ...

Additional Information and Photos

Measurements

Cruising Speed: 25 kn
LOA: 94 ft 6 in

Propulsion

Engine #1

Engine Make: Detroit
Primary Engines: Inboard
Hours: unknown
Power: 940 hp

Engine #2

Engine Make: Detroit
Primary Engines: Inboard
Hours: unknown
Power: 940 hp

Specifications

Length O.A. 94' 6" 28.80 m
Breadth O.A. 23' 7" 7.19 m
Moulded Depth 9' 6" 2.90 m
Design Draft 5' 11" 1.81 m
Gross tonnage 283 t
Nett tonnage 187 t
Capacity 297 passengers, 4 crew
Construction Aluminum
Weight 84.7 t

Additional Information and Photos

Speed 15 knots

Year Built/Rebuilt 1963 / 2013

HULL DECK AND SUPERSTRUCTURE

HULL CONSTRUCTION

TYPE:

Full displacement hull.

MATERIAL:

7/16 inch thick aluminum plate

EXTERIOR HULL:

Hull is painted white.

BULKHEADS:

Electric welded 7/16 inch thick aluminum plate

STRINGERS:

The longitudinal strength is enhanced by full length aluminum stringers.

STEM:

Sharply raked bow stem.

TRANSOM:

Square transom.

BILGE:

Deep (below decks) bilge area provides the area for most boat systems and tankage.

KEEL:

Electric welded aluminum keel.

LIMBER HOLES:

Limber holes are of adequate size and clear where sighted.

FRAMES (RIBS):

Electric welded 7/16 inch thick aluminum frames

DECK CONSTRUCTION

TYPE:

Electric welded 7/16 inch thick aluminum plate.

MATERIAL:

7/16 inch thick aluminum plate

DECK FITTINGS

Additional Information and Photos

CHOCKS AND CLEATS:

Port and starboard aluminum cleats located in strategic locations.

GRAB RAIL:

Aluminum grab rails located strategically

SUPERSTRUCTURE

MATERIAL:

Electric welded 7/16 inch thick aluminum plate.

WINDOWS/PORTS/DOORS:

Port and starboard laminated tinted safety glass windows

BRIDGE DECK

MATERIAL:

Raised pilothouse with helm station.

TYPE:

Provides helm station and crew seating.

SEATS:

Seating for 297 passengers and 8 crew members.

WINDSHIELD:

Pilothouse fitted with laminated tinted plated safety glass windshield.

ADDITIONAL EQUIPMENT AND ACCESSORIES

FENDERS:

Adequate docking fenders.

DOCK LINES:

Adequate 1 inch diameter docking lines.

CABIN APPOINTMENTS

INTERIOR DESCRIPTION:

HEADS:

Ladies and men head facilities.

PROPULSION

MAIN ENGINES

TYPE:

Twin diesel engines.

MANUFACTURER:

Detroit Diesel

HORSE POWER:

Twin 940 horsepower diesel engines.

Additional Information and Photos

NUMBER OF CYLINDERS:

16 cylinders.

PROPULSION

"Cavalier Royal" surveyed by Kelly Marine Surveyors, Inc. - Ft. Lauderdale, FL 33316 Page 8 of 13

MAIN ENGINES (continued)

ENGINE MOUNTS AND BED:

Main engine beds are heavy aluminum longitudinal stringers inboard and outboard.

BILGE BLOWERS:

Engine room equipped with engine room blowers.

EXHAUST SYSTEM:

Raw water cooled 8" steel pipes to flexible hoses to fiber reinforced plastic) silencers. Hose to pipe connections are double clamped where sighted.

COOLING SYSTEM

TYPE:

Closed reservoir type cooling with raw water cooled exhaust.

RAW WATER STRAINERS:

Under water hull mounted strainers. Appears serviceable

ELECTRICAL SYSTEMS

ELECTRICAL SYSTEM (D.C. SYSTEM)

VOLTAGE:

12 V.D.C./24 V.D.C. 12 volt 8-D lead-acid batteries.

CHARGING SYSTEM (BATTERY CHARGER):

12 V.D.C. and 24 V.D.C. automatic battery chargers.

CHARGING SYSTEM (ALTERNATOR):

Port and starboard engines equipped with 24 volt belt driven alternators.

GENERATORS AND INVERTERS

TYPE:

Port and starboard 120 V.A.C./240 V.A.C diesel driven generator power plants.

ELECTRONICS AND NAVIGATION EQUIPMENT

"Cavalier Royal" surveyed by Kelly Marine Surveyors, Inc. - Ft. Lauderdale, FL 33316 Page 10 of 13

ELECTRONICS AND NAVIGATION EQUIPMENT (continued)

COMPASSES:

Compass in in serviceable condition.

SAFETY EQUIPMENT

Additional Information and Photos

SAFETY EQUIPMENT (UNITED STATES COAST GUARD)

NAVIGATION LIGHTS:

Sidelights are operable. Mast head light is operable. Stern light is operable. Anchor light is operable.

AUXILIARY SAFETY EQUIPMENT

LIFE RAFT:

Canister survival rafts adequate for 297 passengers and eight crew.

BILGE PUMPS

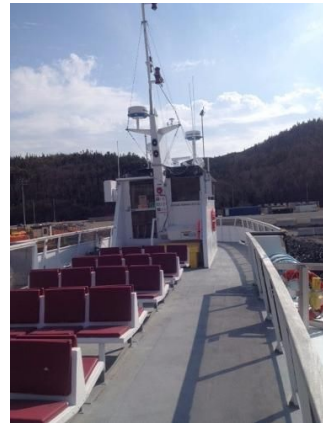
LIST:

115 V.A.C./ 2230 V.A.C. bilge pump/ fire pump with bilge water suction pickups in all water tight bilge compartments.

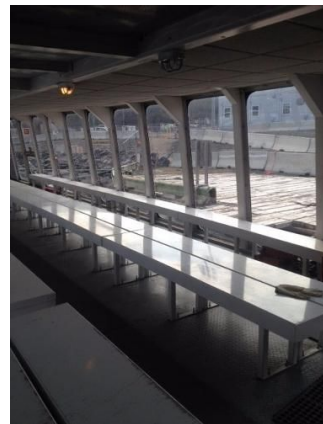
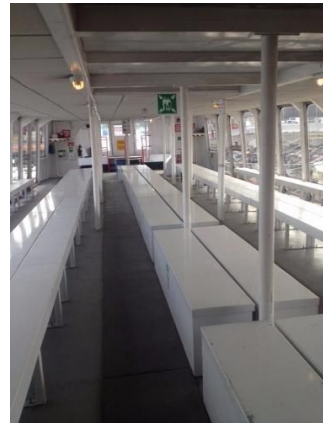
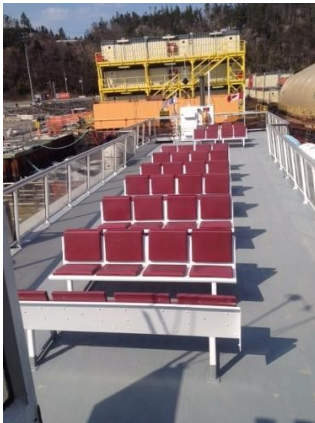
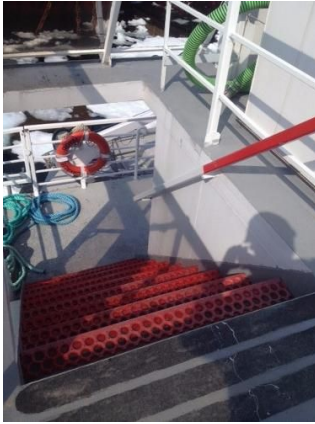
Disclaimer

The Company offers the details of this vessel in good faith but cannot guarantee or warrant the accuracy of this information nor warrant the condition of the vessel. A buyer should instruct his agents, or his surveyors, to investigate such details as the buyer desires validated. This vessel is offered subject to prior sale, price change, or withdrawal without notice.

Additional Information and Photos



Additional Information and Photos



Additional Information and Photos



Additional Information and Photos



Additional Information and Photos



Additional Information and Photos

